

LED Grow light for plant

OB-MFL-300W-PL

SUPER HIGH PERFORMANCE PRICE RATIO

Body powder baking process ,Color bright and long time does not change color .Better protection and not easy to be corrosion , IP grade up to IP66/IP67 All the parts are connected by standard connectors, the connection is safer. Special design makes client maintain the light conveniently even after guarantee is expired.



INCOMPARABLE HEAT-DISSIPATE ENGINE

Adopt heat pine rivet and fins technology, this incomparable heat-dissipate engine efficiently transfers heat from the light source to the large area of fins through, lower temperature of light source rapidly, hence longer lifespan.

THERMAL CONDUCTIVE BOARD

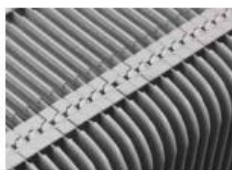


Zero distance joint with heat source, maximize capacity, enhance heat conduction effect hugely.

GEAR SHAPING PATENTED TECHNOLOGY

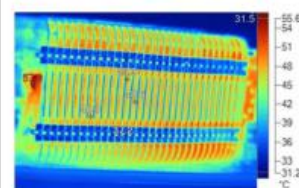
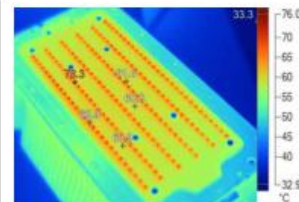


Fins insert into heat conducting plate tightly, maximum lower thermal resistance, no need electroplating, elegant and eco-friendly.



FIN-BUCKLE PATENTED TECHNOLOGY

Fins keep same distance between each other and buckle tightly as a whole, strengthen firmness of fins, maximize heat-dissipate area with minimum weight.



3D HEAT DISSIPATE



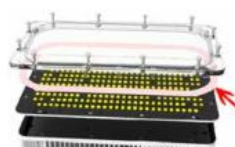
Hollow-out holes distribute in parallel and opposite in every fin, form left-to-right-passthrough convection channel, make three-dimensional heat sink with fin-distance, maximum transfer the heat.

LARGE ADJUSTABLE DEGREE



Screw lock attached installation, multiple adjustable points, adjustable angle is up to 270 degree, adjust lighting beam angle freely.

SEALED SILICON RUBBER RING



By using silicon rubber sealing, waterproof silicone ring, anti-high temperature anti-corrosive the protection rate, can achieve IP67, meeting the requirement for harsh, tough environment.

STAINLESS STEEL PARTS



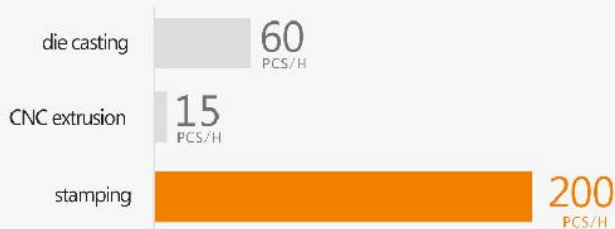
304 stainless steel screws, accessories, Endurancing the corrosion of air, water, chemical acid, alkaline, salt and other materials, can be used in all kinds of harsh conditions for long term.



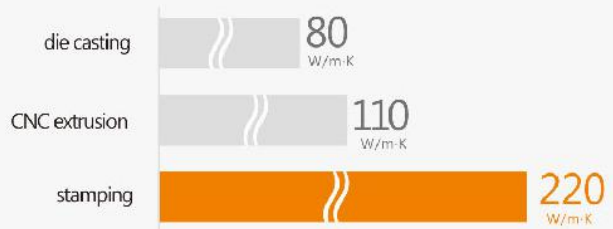
Design Innovation, Cost-Performance

Stamping process, high production efficiency guarantees shortest lead time, good heat dissipation performance, lighting weight, easy assembly and cost effective.

Comparison chart of production efficiency



Comparison chart of heat conductivity coefficient



Features:

This Led adopt light engine LED module and lenses with high reflect efficiency. It has the features of high intense,exchangeable

power supply and Led Boards, easy to maintenance.

High CRI>80,high light efficiency, high power factor, and it is energy saving, environment friendly, stable, safe and reliable.

This Led can be installed in different methods, including surface mounted and pendant, totally easy and convenient.

Anti-shock, easy to transport, it is safer and more reliable than traditional fluorescent lamps.

The use of aluminum extrusion heat-sink makes the heat-dissipation better than other products.

Innovative design LED Flood light, LED Modular Light

High efficacy of >100lm/W

0/1-10V Dimmable, DALI, ZigBee, PLC Dimmable system

Compact size with light weight

3 Year warranty

Easy Installation

Surge Protection Devices(SPDs) 10KV/20KV Optional

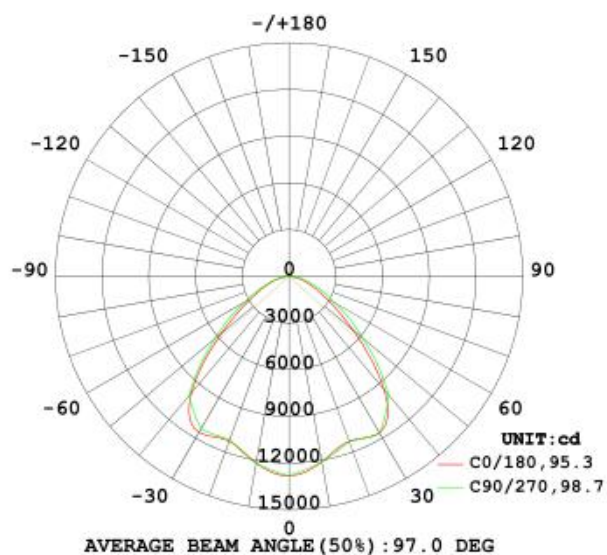
PF	>0.95
LED Source	CREE XTE 660nm deep red CREE XPG3 22pcs 4000K
CRI(Ra)	>80
Beam Angle	45° /60° /90° /120°
Life Span	50,000 Hours
sIP Rating	IP65

Specification:

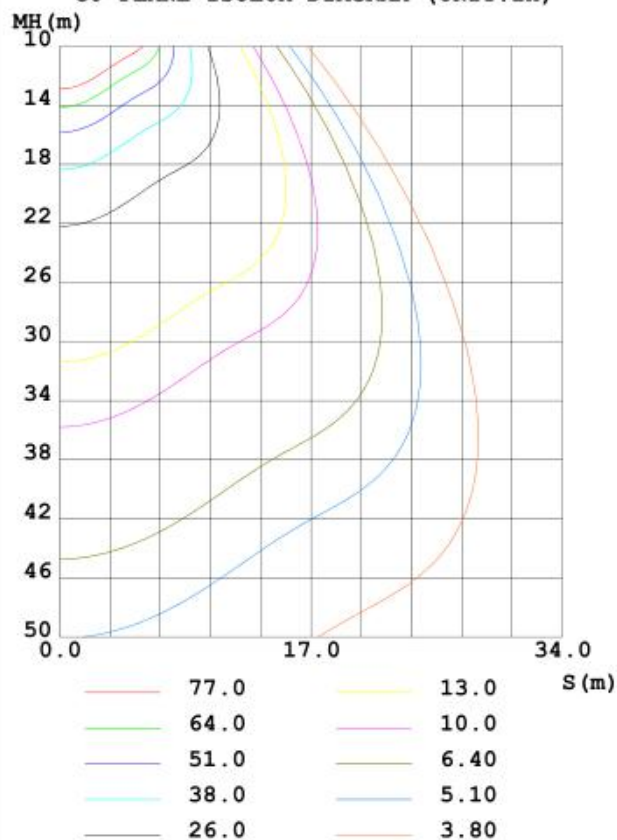
Model No.	Power	Voltage	Luminous Flux	Color Temperature	Beam Angle	Packing:
OB-MFL-300W-PL	300W	85-265 VAC / 90~305V, , 50-60Hz;	30020 lm (Ta=25° C); 133Lm/W	4000K+660nm	45° /60° /90° /120°	10kg, 1 Pcs/Carton.

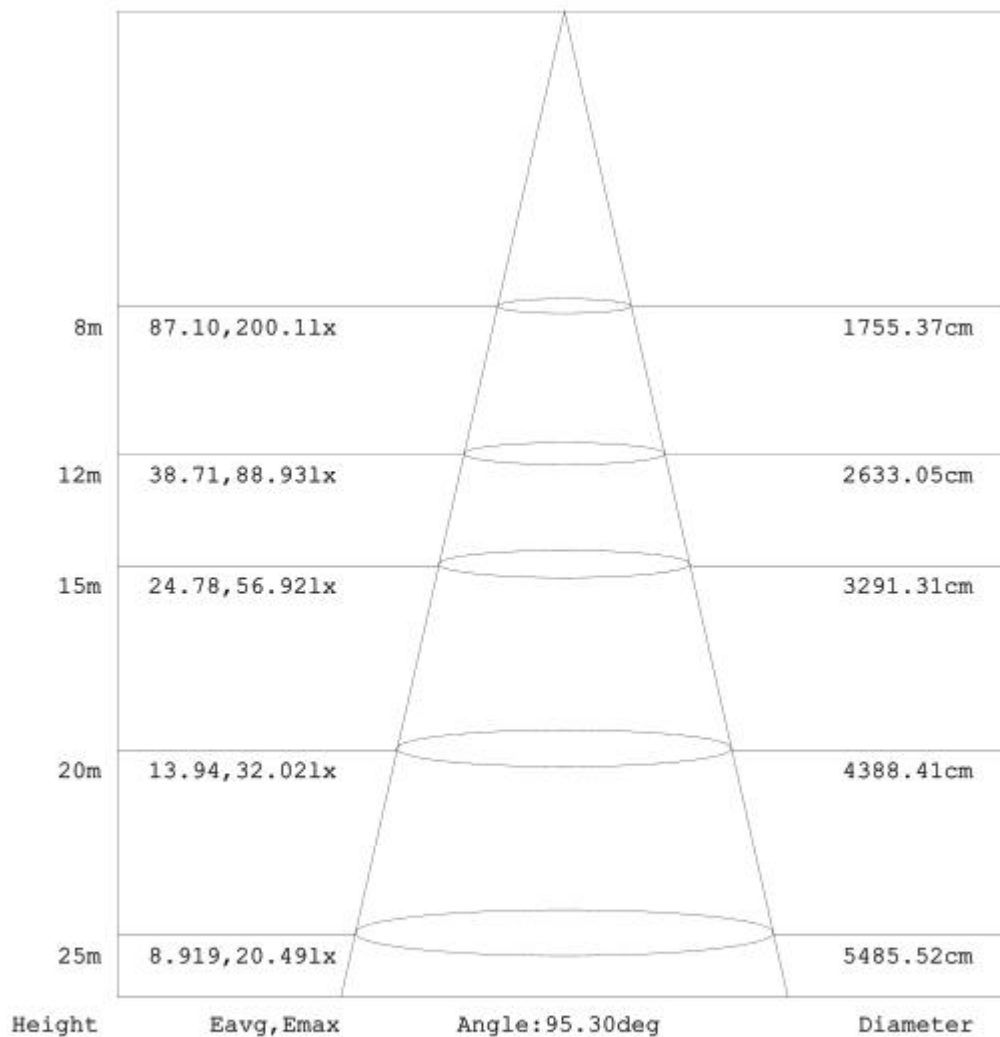
Technical information:

LUMINOUS INTENSITY DISTRIBUTION DIAGRAM



C0 PLANE ISOLUX DIAGRAM (UNIT:lx)





Note: The Curves indicate the illuminated area and the average illumination when the luminaire is at different distance.

Application:

Widely used in herbal medicine planting, plant seedlings, planting flowers, planting vegetables, plant lighting.

Package

Carton size: 46x40x52cm G.W: 19.3kg 1 Carton
2Pcs in one carton

Application



